

A New Species of the Genus *Pterolophia* (Coleoptera, Cerambycidae)
from the Ogasawara Islands, Japan

Michiaki HASEGAWA

Toyohashi Museum of Natural History, 1–238 Oana, Oiwa, Toyohashi, 441–3147 Japan

and

Hiroshi MAKIHARA

Forestry and Forest Products Research Institute, Ibaraki, 305–0903 Japan

Abstract A new lamiine species, *Pterolophia* (*Pterolophia*) *kusamai* sp. nov., is described from Chichi-jima Island of the Ogasawara Islands, Japan. It resembles *P. (P.) obscura* from Taiwan, but is evidently different in coloration and mode of color pattern.

In June 1996, the junior author collected a strange *Pterolophia* species by beating a half-dead branch of *Ardisia sieboldii* MIQ. (Myrsinaceae) near Mt. Coffee-yama on Chichi-jima Island of the Ogasawara Islands. After a careful examination, we have come to the conclusion that this species is a new member of the subgenus *Pterolophia*. In this paper, we are going to describe it under the name *P. kusamai* in honor of the late Dr. Keiichi KUSAMA for his contributions to various entomological subjects.

Before going further, we wish to express our deep gratitude to Mr. Tatsuya NIISATO of Bioindicator Co., Ltd., Tokyo, for reading through the original manuscript of this paper.

The abbreviations used in this paper are as follows: OW – maximum width of occiput measured across temples; OL – length of occiput measured from the posterior margin to vertex; IEL – length of inferior eye lobe, measured in frontal view; LG – length of gena, measured in lateral view; PL – length of pronotum; PW – maximum width of pronotum; PA – apical width of pronotum; PB – basal width of pronotum; EL – length of elytra; EW – width of elytra across humeri; TL – total length of body, from tip of head to elytral apices.

The holotype is deposited in the Toyohashi Museum of Natural History, Toyohashi City. This study is a part of the “Research on Restoration and Management of Forest Ecosystem on the Bonin Islands” made by the Environmental Agency, Government of Japan, and Forestry and Forest Products Research Institute.

Pterolophia (Pterolophia) kusamai HASEGAWA et MAKIHARA, sp. nov.

[Japanese name: Kusama-sabi-kamikiri]

(Figs. 1–2)

Female. Medium-sized, form robust and weakly depressed. Body dark reddish brown, dullish, clothed with light reddish brown pubescence and sparsely mottled with short white hairs; head light chocolate brown, mouth parts light amber except for black mandibles, antennae of the same color as head, apical parts of segments 3–11 darkened, antennal segments gradually darkened apicad, decorated with white pubescence in basal half of segment 4, and each basal margin of segments 3 and 5–11; pronotum dark reddish brown, with a pair of blackish obscure maculation at the basal sides of disc; elytra of the same color as pronotum, each provided with broad and oblique vague blackish band, which extends from basal 1/3 of external margin to basal 2/3, broad externally but not reaching suture; abdominal sternite 7 shiny black; legs chocolate brown.

Head finely and sparsely punctured, rather swollen, OW/OL 2.1, OW/PW 0.89; frons slightly convex along median line from clypeus to neck; interantennal area weakly convex; vertex shallowly concave; occiput moderately convex; eyes small, inferior eye lobes rounded, LEL/LG 0.69. Antennae thick and relatively short, 0.83 times as long as body, relative length of each segment as follows (%)— 14.7: 4.2: 18.2: 16.8: 9.1: 8.1: 7.0: 6.3: 5.6: 4.9: 4.9; segments 2–11 densely provided beneath with long erect hairs; scape moderately stout, even beneath; segment 4 rather strongly arcuate.

Pronotum subcylindrical, PB/PA 1.0, PL/PW 0.81, PW/EW 0.73, PL/EL 0.31; sides slightly swollen, weakly constricted behind apex and before base; disc almost

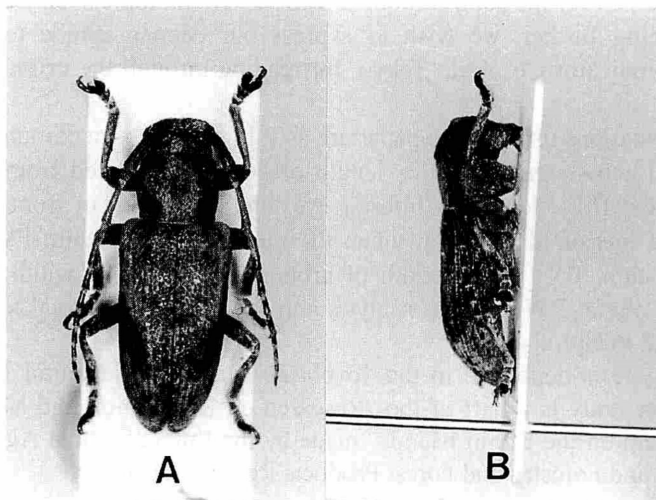


Fig. 1. *Pterolophia kusamai* sp. nov., ♀, holotype; A: dorsal view; B: lateral view.

even, weakly punctured. Scutellum semicircular. Elytra robust and rather short, EL/EW 1.89, EL/TL 0.68; sides with humeri weakly developed, slightly convergent to basal 3/4, then arcuately so to apices which are narrowly and obliquely truncate; disc almost even, densely punctured, with a pair of vestigial callosities at bases, and with shallowly obliquely impressed areas just behind callosities; each elytron with three costae, of which the vague inner one extends from just behind the basal callosity, the distinct middle one extending from inside humerus and joining the former at apical 1/6, the vague outer one from behind humerus. Abdominal sternite 7 rounded, without pubescence. Legs moderate in length, femur not clavate; tibia normal, not arcuate; fore tarsi somewhat strongly dilated toward apex.

Body length 11.8 mm.

Type specimen. Holotype ♀, Mt. Coffee-yama, Chichi-jima Is., Ogasawara Islands, Japan, 22-VI-1996, H. MAKIHARA leg. (TMNH-I-6290).

Distribution. Chichi-jima Island of the Ogasawara Islands, Japan.

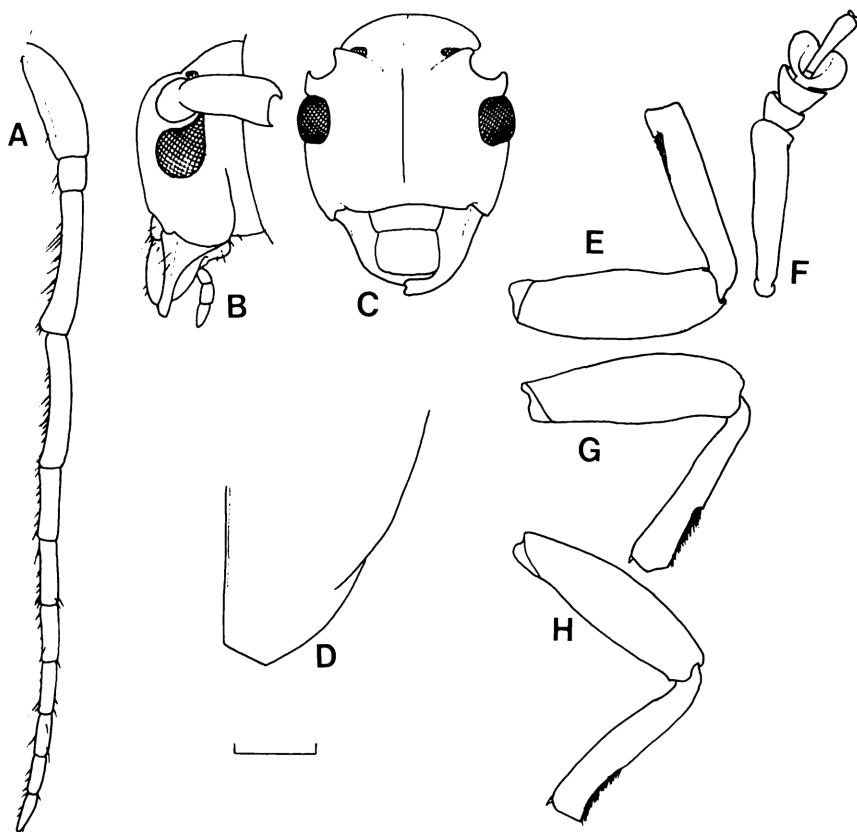


Fig. 2. *Pterolophia kusamai* sp. nov. — A: Antenna, B: head in frontal view, C: ditto in lateral view, D: apex of elytron, E: fore leg in ventral view, F: fore tibia and tarsus in dorsal view, G: middle leg in ventral view, H: hind leg in ventral view. Scale: 1 mm.

Notes. This species somewhat reminds us of *Pterolophia (Pterolophia) obscura* SCHWARZER from Taiwan, but can be easily distinguished from the latter by the following characteristics: body dark reddish brown; elytra provided with an oblique blackish band on each side and without semicircular maculation in apical portion; 7th abdominal sternite shiny black, without pubescence.

要 約

長谷川道明・榎原 寛：小笠原諸島から発見されたサビカミキリ属の1新種。—— 森林総合研究所と環境庁が共催する「小笠原森林生態系の修復・管理技術に関する研究」の一環として行われた調査によって、父島から発見されたクサマサビカミキリ *Pterolophia (Pterolophia) kusamai* (新種・新称) を記載した。本種は、1996年に筆者の一人、榎原によって、半枯れ状態となったモクダチバナの枝より採集された。暗い赤褐色で、上翅にやや不明瞭な黒色の傾帯をもつ種で、台湾に産する *P. (P.) obscura* SCHWARZER, 1925 に比較的好く似ているが、体形や翅端部に黄褐色の紋を欠くことから区別は容易である。

References

- BREUNING, S., 1965. Revision der 35. Gattung der Pteropliini der asiatischen Region (Col. Cerambycidae). *Ent. Arb. Mus. Frey*, **16**: 161–472.
- GRESSITT, J. L., 1951. Longicorn beetles of China. *Longicornia*, **2**: 1–667, 22 pls.
- 1956. Coleoptera: Cerambycidae. *Insects of Micronesia*, **17**: 61–183.
- HASEGAWA, M., 1992. Genus *Pterolophia* NEWMAN. In OHBAYASHI, N., et al. (eds.), *An Illustrated Guide to Identification of Longicorn Beetles of Japan*, 166–168, 565–571. Tokai University Press, Tokyo. (In Japanese, with English book title.)
- SCHWARZER, B., 1925. H. SAUTER'S Formosa-Ausbeute: Cerambycidae, Col. *Ent. Blätt.*, **21**: 58–68.